

Disclosure under Basel III Norms as on 30th June 2018

1: Scope of Application

The South Indian Bank Limited is a commercial bank, which was incorporated on January 25, 1929 in Thrissur, Kerala. The Bank does not have any Subsidiary/Associate companies under its Management.

2: Capital Adequacy

I. Qualitative Disclosure

RBI Guidelines on Capital Adequacy

The Bank is subject to the capital adequacy guidelines stipulated by RBI, which are based on the framework of the Basel Committee on Banking Supervision. As per Basel III guidelines, the Bank is required to maintain a minimum Capital to Risk Weighted Assets Ratio (CRAR) of 9% {11.5% including Capital Conservation Buffer (CCB)}, with minimum Common Equity Tier I (CET1) of 5.5% (8% including CCB) as on 31st March 2019. These guidelines on Basel III have been implemented on 1st April 2013 in a phased manner. The minimum capital required to be maintained by the Bank for the year ended 30th June 2018 is 10.875 % with minimum Common Equity Tier 1 (CET1) of 7.375% (including CCB of 1.875%).

The Bank's Approach in Assessment of Capital Adequacy

The bank is following Standardized Approach, Standardized Duration Approach and Basic Indicator Approach for measurement of capital charge in respect of credit risk, market risk and operational risk respectively. Besides, computation of CRAR under the Pillar I requirement, the Bank also periodically undertakes stress testing in various risk areas to assess the impact of stressed scenario or plausible events on asset quality, liquidity, profitability and capital adequacy. The bank conducts Internal Capital Adequacy Assessment Process (ICAAP) on quarterly basis to assess the sufficiency of its capital funds to cover the risks specified under Pillar- II of Basel guidelines. The adequacy of banks capital funds to meet the future business growth is also assessed in the ICAAP document.

Quantitative Disclosure

Summary of the Bank's capital requirement for credit, market and operational risk and the capital adequacy ratio as on 30th June 2018 is presented below:

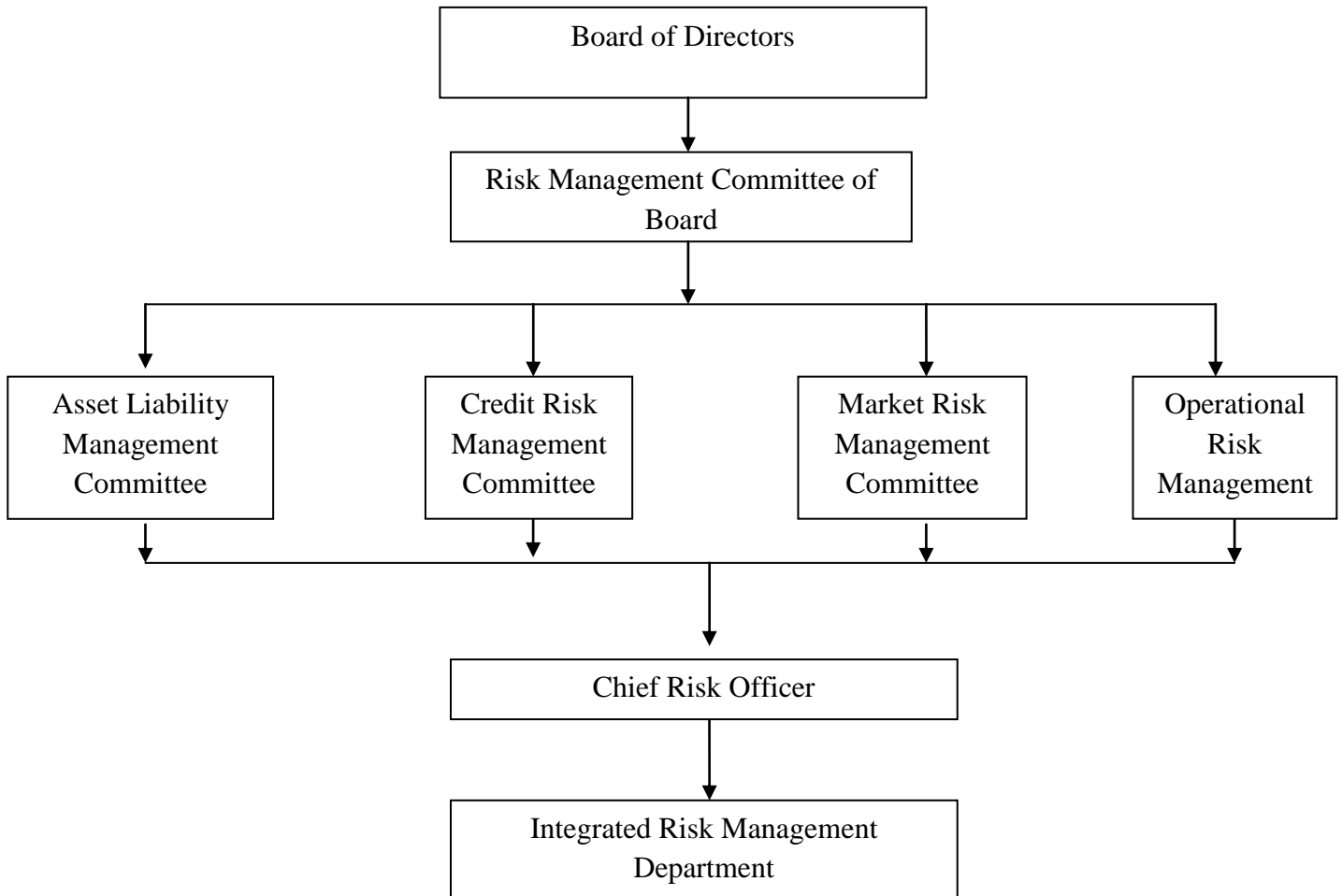
	Particulars	Amount in Rs Millions
(a)	Capital requirements for Credit Risk	45,934.28
	Portfolios subject to Standardized Approach	45,934.28
	Securitization exposures	0.00
(b)	Capital requirements for Market Risk (Standardised Duration Approach)	3,297.33
	Interest Rate Risk	2,657.09
	Foreign Exchange Risk (including gold)	48.94
	Equity Risk	591.30
(c)	Capital requirements for Operational Risk (Basic Indicator Approach)	4,738.49
	Total Capital Requirement at 10.875% { (a)+ (b)+(c) }	53,970.10
	Total Capital Fund	60,707.62
	Common Equity Tier- I CRAR %	10.11%
	Tier- I CRAR %	10.11%
	Total CRAR %	12.23 %

Risk Management: Objectives and Organisation Structure

Risk is an integral part of banking business in an ever dynamic environment, which is undergoing radical changes both on the technology front and product offerings. The main risks faced by the bank are credit risk, market risk and operational risk. The bank aims to achieve an appropriate trade off between risk and return to maximize shareholder value. The relevant information on the various categories of risks faced by the bank is given in the ensuing sections. This information is intended to give market participants a better idea on the risk profile and risk management practices of the bank.

The bank has a comprehensive risk management system set up to address various risks and has set up an Integrated Risk Management Department (IRMD), which is independent of operational departments. Bank has a Risk Management Committee functioning at apex level for formulating, implementing and reviewing bank's risk management measures pertaining to credit, market and operational risk. Apart from the Risk Management Committee of the Board at apex level, the Bank has a strong Bank-wide risk management structure comprising of Asset Liability Management

Committee, Credit Risk Management Committee, Market Risk Management Committee and Operational Risk Management Committee at senior management level, operational risk management specialists in all Regional Offices and dedicated mid office at Treasury Department at operational level. The structure and organization of Risk Management functions of the bank is as follows:





3. Credit Risk: General Disclosures

I. Qualitative Disclosure

Definition of Non Performing Assets

The bank follows extant guidelines of the RBI on income recognition, asset classification and provisioning.

- a) An asset, including a leased asset, becomes non-performing when it ceases to generate income for the bank.
- b) A non performing asset (NPA) is a loan or an advance where;
 - i. Interest and / or installment of principal remains overdue for a period of more than 90 days in respect of a term loan,
 - ii. the account remains 'out of order', in respect of an Overdraft / Cash Credit (OD/ CC), (out of order - An account is treated as 'out of order' if the outstanding balance remains continuously in excess of the sanctioned limit/drawing power. In cases where the outstanding balance in the principal operating account is less than the sanctioned limit / drawing power, but there are no credits continuously for 90 days as on the date of Balance Sheet or credits are not enough to cover the interest debited during the same period, these accounts are treated as “out of order”.)
 - iii. the bill remains overdue for a period of more than 90 days in the case of bills Purchased and discounted, (overdue - Any amount due to the bank under any credit facility is “overdue” if it is not paid on the due date fixed by the bank.)
 - iv. The instalment of principal or interest thereon remains overdue for two crop seasons for short duration crops, (overdue - Any amount due to the bank under any credit facility is “overdue” if it is not paid on the due date fixed by the bank.)
 - v. The instalment of principal or interest thereon remains overdue for one crop season for long duration crops, (overdue - Any amount due to the bank under any credit facility is ‘Overdue’ if it is not paid on the due date fixed by the bank.)
 - vi. Any amount to be received remains overdue for a period of more than 90 days in respect of



other accounts.

- vii. The amount of liquidity facility remains outstanding for more than 90 days, in respect of a securitization transaction undertaken in terms of RBI guidelines on Securitization dated February 1, 2006.
- viii. In respect of derivative transactions, the overdue receivables representing positive Mark-to-market value of a derivative contract, if these remain unpaid for a period of 90 days from the specified due date for payment.

A loan for an infrastructure project will be classified as NPA during any time before commencement of commercial operations as per record of recovery (90 days overdue), unless it is restructured and becomes eligible for classification as 'standard asset' in terms of conditions laid down in the related RBI guidelines. A loan for an infrastructure project will be classified as NPA if it fails to commence commercial operations within two years from the original Date of Commencement of Commercial Operations ('DCCO'), even if it is regular as per record of recovery, unless it is restructured and becomes eligible for classification as 'standard asset' in terms of conditions laid down in the related RBI guidelines.

A loan for a non-infrastructure project (other than commercial real estate exposures) will be classified as NPA during any time before commencement of commercial operations as per record of recovery (90 days overdue), unless it is restructured and becomes eligible for classification as 'standard asset' in terms of conditions laid down in the related RBI guidelines. A loan for a non-infrastructure project (other than commercial real estate exposures) will be classified as NPA if it fails to commence commercial operations within one year from the original DCCO, even if is regular as per record of recovery, unless it is restructured and becomes eligible for classification as 'standard asset' in terms of conditions laid down in the related RBI guidelines.

A loan for commercial real estate project will be classified as NPA during any time before commencement of commercial operations as per record of recovery (90 days overdue), or if the project fails to commence commercial operations within one year from the original DCCO or if the loan is restructured.

Credit Risk Management Practices of our Bank

The bank has a comprehensive credit risk management policy which deals with identification, assessment, measurement and mitigation of credit risk. The policy has defined credit risk as the possibility of losses associated with the diminution in the credit quality of the borrower or the counter party or the failure on its part to meet its obligations in accordance with the agreed terms.



The Credit Risk Management Committee, an executive level committee is entrusted with the task of overseeing various risk management measures envisaged in the policy. The Credit Risk Management Committee also deals with issues relating to credit risk management policy and procedures and analyse, manage and control credit risk on a bank wide basis. Credit risk management policy primarily addresses the credit risk inherent in advances. The principal aspects covered under this policy include credit risk rating, credit risk monitoring, credit risk mitigation and country risk management.

The major specific credit risk management measures followed by bank, as listed out in the credit risk management policy are given in following points.

- The credit/country risk associated with exposures, like inter-bank deposits and export bill discounting, to different countries are consolidated regularly and monitored by the Board.
- Bank uses a robust risk rating framework for evaluating credit risk of the borrowers. The bank uses segment-specific rating models that are aligned to target segment of the borrowers.
- Risks on various counter-parties such as corporates, banks, are monitored through counter-party exposure limits, also governed by country risk exposure limits in case of international transactions.
- The bank manages risk at the portfolio level too, with portfolio level prudential exposure limits to mitigate concentration risk.

II. Quantitative Disclosure

a) Gross Credit Risk Exposures as on 30th June 2018

Amount in Rs Millions

Category	Exposure
Fund Based ¹	7,28,308.02
Non Fund Based ²	48,921.27
Total	7,77,229.29

Note :

1. Fund based credit exposure excludes Cash in hand, Balance with RBI, SLR investments, shares, deposits placed NABARD, SIDBI & NHB, Fixed and Other assets.
2. Non-fund based exposure includes Letter of Credit, Acceptances, Bank Guarantee

exposures and Forward Contracts. The value of forward contracts is arrived based on Current Exposure Method (CEM).

b) Geographical Distribution of Credit Risk Exposure as on 30th June 2018

Particulars	Amount in Millions
Domestic	7,77,229.29
Overseas	Nil
Total	7,77,229.29

c) Industry wise Distribution of Exposure as on 30th June 2018

(Rs in Millions)

Industry Name	Gross Advance	GNPA	Standard Advance
A. Mining and Quarrying	1,338.98	21.94	1,317.04
A.1 Coal	33.98	19.04	14.94
A.2 Others	1,304.99	2.90	1,302.09
B. Food Processing	844.89	1.42	843.47
B.1 Sugar	11.31	-	11.31
B.2 Edible Oils and Vanaspati	20.78	-	20.78
B.3 Tea	25.93	-	25.93
B.4 Coffee	-	-	-
B.5 Others	786.87	1.42	785.45
C. Beverages (excluding Tea & Coffee) and Tobacco	3,913.01	6.37	3,906.64
C.1 Tobacco and tobacco products	299.97	-	299.97
C.2 Others	3,613.04	6.37	3,606.67
D. Textiles	41,581.91	2,036.41	39,545.50
D.1 Cotton	12,479.55	558.25	11,921.30
D.2 Jute	348.98	-	348.98
D.3 Man-made	208.84	11.28	197.56
D.4 Others	12,565.66	510.67	12,054.98
Out of D (i.e., Total Textiles) to Spinning Mills	15,978.89	956.20	15,022.68
E. Leather and Leather products	1,445.86	112.36	1,333.50

F. Wood and Wood Products	1,140.58	54.88	1,085.70
G. Paper and Paper Products	4,243.72	127.38	4,116.34
H. Petroleum (non-infra), Coal Products (non-mining) and Nuclear Fuels	1,867.45	-	1,867.45
I. Chemicals and Chemical Products (Dyes, Paints, etc.)	10,298.30	15.29	10,283.01
I.1 Fertilizers	712.60	-	712.60
I.2 Drugs and Pharmaceuticals	4,608.92	-	4,608.92
I.3 Petro-chemicals (excluding under Infrastructure)	-	-	-
I.4 Others	4,976.78	15.29	4,961.49
J. Rubber, Plastic and their Products	11,942.60	102.52	11,840.08
K. Glass & Glassware	1,163.66	0.16	1,163.50
L. Cement and Cement Products	10,674.64	2,272.56	8,402.07
M. Basic Metal and Metal Products	20,959.94	330.39	20,629.55
M.1 Iron and Steel	9,965.27	130.02	9,835.25
M.2 Other Metal and Metal Products	10,994.67	200.37	10,794.30
N. All Engineering	12,400.18	942.83	11,457.35
N.1 Electronics	69.21	1.02	68.19
N.2 Others	12,330.97	941.82	11,389.16
O. Vehicles, Vehicle Parts and Transport Equipments	4,169.51	2,346.09	1,823.42
P. Gems and Jewellery	5,794.58	1,003.19	4,791.39
Q. Construction	7,749.11	150.73	7,598.38
R. Infrastructure	29,252.53	5,459.32	23,793.21
R.a Transport (a.1 to a.6)	15,859.86	4,616.62	11,243.23
R.a.1 Roads and Bridges	15,859.86	4,616.62	11,243.23
R.a.2 Ports	-	-	-
R.a.3 Inland Waterways	-	-	-
R.a.4 Airport	-	-	-
R.a.5 Railway Track, tunnels, viaducts, bridges	-	-	-
R.a.6 Urban Public Transport (except rolling stock in case of urban road transport)	-	-	-
R.b. Energy (b.1 to b.6)	9,322.11	-	9,322.11
R.b.1 Electricity Generation	6,647.67	-	6,647.67
R.b.1.1 Central Govt PSUs	-	-	-
R.b.1.2 State Govt PSUs (incl. SEBs)	856.93	-	856.93
R.b.1.3 Private Sector	5,790.73	-	5,790.73
R.b.2 Electricity Transmission	2,628.78	-	2,628.78

R.b.2.1 Central Govt PSUs	-	-	-
R.b.2.2 State Govt PSUs (incl. SEBs)	398.62	-	398.62
R.b.2.3 Private Sector	2,230.16	-	2,230.16
R.b.3 Electricity Distribution	45.66	-	45.66
R.b.3.1 Central Govt PSUs	-	-	-
R.b.3.2 State Govt PSUs (incl. SEBs)	-	-	-
R.b.3.3 Private Sector	45.66	-	45.66
R.b.4 Oil pipelines	-	-	-
R.b.5 Oil/Gas/Liquefied Natural Gas (LNG) storage facility	-	-	-
R.b.6 Gas pipelines	-	-	-
R.c. Water and Sanitation (c.1 to c.7)	-	-	-
R.c.1 Solid Waste Management	-	-	-
R.c.2 Water supply pipelines	-	-	-
R.c.3 Water treatment plants	-	-	-
R.c.4 Sewage collection, treatment and disposal system	-	-	-
R.c.5 Irrigation (dams, channels, embankments etc)	-	-	-
R.c.6 Storm Water Drainage System	-	-	-
R.c.7 Slurry Pipelines	-	-	-
R.d. Communication (d.1 to d.3)	2.44	-	2.44
R.d.1 Telecommunication (Fixed network)	-	-	-
R.d.2 Telecommunication towers	-	-	-
R.d.3 Telecommunication and Telecom Services	2.44	-	2.44
R.e. Social and Commercial Infrastructure (e.1 to e.9)	-	-	-
R.e.1 Education Institutions (capital stock)	-	-	-
R.e.2 Hospitals (capital stock)	-	-	-
R.e.3 Three-star or higher category classified hotels located outside cities with population of more than 1 million	-	-	-
R.e.4 Common infrastructure for industrial parks, SEZ, tourism facilities and agriculture markets	-	-	-
R.e.5 Fertilizer (Capital investment)	-	-	-
R.e.6 Post harvest storage infrastructure for agriculture and horticultural produce including cold storage	-	-	-
R.e.7 Terminal markets	-	-	-
R.e.8 Soil-testing laboratories	-	-	-
R.e.9 Cold Chain	-	-	-

R.f. Others, if any, please specify	4,068.13	842.70	3,225.43
Social Infrastructure	4,068.13	842.70	3,225.43
S. Other Industries, pl. specify	6,722.53	329.40	6,393.13
Other Industries	6,722.53	329.40	6,393.13
All Industries (A to S)	1,61,525.08	14,357.04	1,47,168.04

d) Residual Contractual Maturity breakdown of Assets as on 30th June 2018

(Amount in Rs Million)

Time band	Cash and Balance with RBI	Balance with Banks	Investments	Loans & Advances	Fixed Asset	Other Assets
Next Day	3,499.14	453.99	10,633.09	12,848.52	-	141.32
2 - 7 Day	-	1,328.17	9,557.23	10,455.03	-	599.02
8 - 14 Day	-	37.17	811.87	8,711.49	-	740.34
15 - 30 Day	665.97	94.34	6,389.03	20,494.31	-	944.16
31 - 2 Months	1,989.86	116.66	5,794.94	27,901.06	-	1,829.58
29 - 3 Months	1,541.61	-	7,842.49	24,607.26	-	1,832.87
3 - 6 Months	1,774.76	-	5,290.44	61,950.49	-	4,565.98
6 - 12 Months	2,774.60	-	14,760.39	73,999.20	-	8,708.15
1 - 3 Year	2,860.59	-	15,515.07	74,225.26	-	18,824.90
3 - 5 Year	1,932.01	-	13,340.45	33,130.13	-	761.99
Over 5 Year	16,927.82	-	94,632.50	2,06,118.39	6,787.50	11,035.29
Total	33,966.36	2,030.33	1,84,567.50	5,54,441.14	6,787.50	49,983.60

e) The composition of Gross NPAs and NPIs, Net NPAs, NPA ratios and provision for GNPA and GNPIs as on 30th June 2018 and movement of gross NPAs and provisions during the quarter ended 30th June 2018 are given in following table.

Rs in Million

1.	Amount of Gross NPAs	25,521.82
	• Substandard	14,353.62
	• Doubtful-I	5,803.42
	• Doubtful-2	4,863.12
	• Doubtful-3	213.67
	• Loss	287.99

2.	Net NPA	18,138.81
3	NPA Ratios	
	<ul style="list-style-type: none"> Gross NPA to Gross Advance (%) 	4.54%
	<ul style="list-style-type: none"> Net NPA to Net Advance (%) 	3.27%
	Movement of N PA (Gross)	
	<ul style="list-style-type: none"> Opening Gross NPA (balance as on 01.04.2018) 	19,803.05
	<ul style="list-style-type: none"> Additions to Gross NPA 	6,087.97
	<ul style="list-style-type: none"> Reductions to Gross NPA 	369.20
	<ul style="list-style-type: none"> <i>Up gradations</i> 	235.47
	<ul style="list-style-type: none"> <i>Recoveries (excluding recoveries made from upgraded accounts)</i> 	133.73
	<ul style="list-style-type: none"> Closing Balance of Gross NPA (as on 30.06.2018) 	25,521.82

Movement of Specific & General Provision – Position as on 30th June 2018

(Rs in millions)

Movement of Provision	Specific Provision	General Provision
<ul style="list-style-type: none"> Opening Balance as on 01.04.2018 	5,410.53	0.00
<ul style="list-style-type: none"> Provision made in Q-1 2018-19 	1,830.42	0.00
<ul style="list-style-type: none"> Write off/ Write back of excess provision 	92.44	0.00
<ul style="list-style-type: none"> Closing Balance as on 30.06.2018 	7,148.51	0.00

NPIs and Movement of Provision for Depreciation on Investments – Position as on 30th June 2018

(Rs in millions)

1	Amount of Non Performing Investments (Gross)	454.15
2	Amount of Provisions held Non Performing Investments	449.89
	Movement of Provisions for Depreciation on Investments	
3	<ul style="list-style-type: none"> Opening Balance (as on 01.04.2018) 	3,426.22
	<ul style="list-style-type: none"> Provision made in Q-1 2018-19 	788.32
	<ul style="list-style-type: none"> Write-offs / Write-back of excess provisions during the period 	531.60
	<ul style="list-style-type: none"> Closing Balance (as on 30.06.2018) 	3,682.94



Geographical Distribution of NPA and Provision

(Rs in Millions)

Geography	Gross NPA	Specific Provision	General Provision
Domestic	25,521.82	7,148.51	0.00
Overseas	0.00	0.00	0.00
Total	25,521.82	7,148.51	0.00

4: Credit Risk: Disclosure for Portfolios under Standardized Approach

I. Qualitative Disclosure

a. Names of credit rating agencies used

Bank has approved all the Seven External Credit Rating Agencies accredited by RBI for the purpose of credit risk rating of domestic borrowal accounts that forms the basis for determining risk weights under Standardized Approach. External Credit Rating Agencies approved are:

1. CRISIL
2. CARE
3. India Ratings and Research Private Limited (Formerly FITCH INDIA)
4. ICRA
5. Brickwork Ratings India Pvt. Ltd
6. ACUITE Ratings and Research limited (Formerly SMERA Ratings Ltd)
7. Infomerics Rating Pvt Limited

The Bank computes risk weight on the basis of external rating assigned, both Long Term and Short Term, for the facilities availed by the borrower. The external ratings assigned are generally facility specific. The Bank follows below mentioned procedures as laid down in the Basel III guidelines for use of external ratings:

- The external rating assigned by an agency is considered if it fully takes into account the credit exposure of the bank.
- If an issuer has a long- term exposure with an external long term rating that warrants a risk weight of 150 percent, all unrated claims on the same counter-party, whether short term or

long-term, should also receive a 150 percent risk weight, unless the bank uses recognized credit risk mitigation techniques for such claims.

- If an issuer has a short-term exposure with an external short term rating that warrants a risk weight of 150 per cent, all unrated claims on the same counter-party, whether long-term or short-term, should also receive a 150 per cent risk weight, unless the bank uses recognized credit risk mitigation techniques for such claims.
- The unrated short term claim of counterparty will attract a risk weight of at least one level higher than the risk weight applicable to the rated short term claim on that counter-party. If a short-term rated facility to counterparty attracts a 20 per cent or a 50 per cent risk weight, unrated short-term claims to the same counter-party cannot attract a risk weight lower than 30 per cent or 100 per cent respectively.

b. Process used to transfer public issue ratings onto comparable assets in the banking book

- (i) In circumstances where the borrower has a specific assessment for an issued debt - but the bank's claim is not an investment in this particular debt - the rating applicable to the specific debt (where the rating maps into a risk weight lower than that which applies to an unrated claim) may be applied to the bank's un-assessed claim only if this claim ranks pari passu or senior to the specific rated debt in all respects and the maturity of the un-assessed claim is not later than the maturity of the rated claim, except where the rated claim is a short term obligation. If not, the rating applicable to the specific debt cannot be used and the un-assessed claim will receive the risk weight for unrated claims.
- (ii) If either the issuer or single issue has been assigned a rating which maps into a risk weight equal to or higher than that which applies to unrated claims, a claim on the same counterparty, which is unrated by any chosen credit rating agency, will be assigned the same risk weight as is applicable to the rated exposure, if this claim ranks pari-passu or junior to the rated exposure in all respects.

II. Quantitative Disclosures

Amount of exposure (after risk mitigation) outstanding as on 30th June 2018 under major three risk buckets

Description of risk bucket	Rs in Million
Below 100% Risk Weight	4,95,857.65
Risk Weight at 100%	1,85,849.4
More than 100% Risk Weight	63,894.90
Deducted if any	

(Amount of exposures includes cash in hand, balance with RBI, investments, loans and advances, Fixed and other assets, off balance sheet items and forward contracts)

Leverage Ratio:

Leverage ratio is a non-risk based measure of exposure over capital. The leverage ratio is calibrated to act as a credible supplementary measure to the risk based capital requirements.

The Basel III leverage ratio is defined as the capital measure (the numerator) divided by the exposure measure (the denominator), with this ratio expressed as a percentage.

$$\text{Leverage Ratio} = \frac{\text{Capital Measure (Tier I Capital)}}{\text{Exposure Measure}}$$

(Amount in Rs. Millions)

Tier I Capital	50,152.78
Exposure Measure	8,70,355.85
Leverage Ratio	5.76%